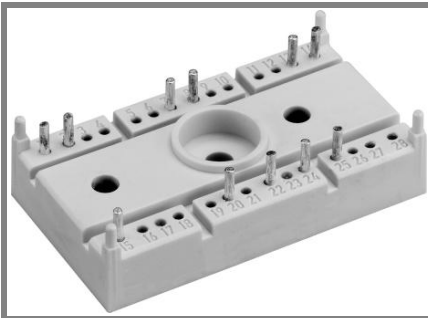


SK 70 DT



SEMITOP[®] 3

Controlled Bridge Rectifier

SK 70 DT

Preliminary Data

Features

Typical Applications

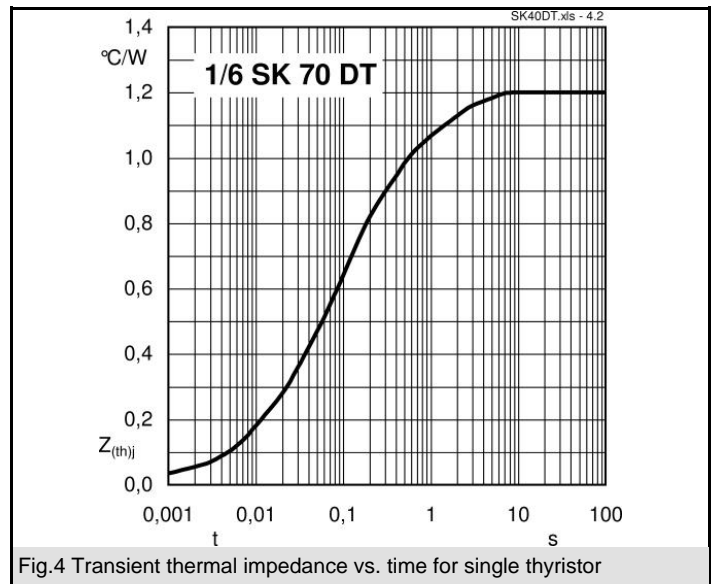
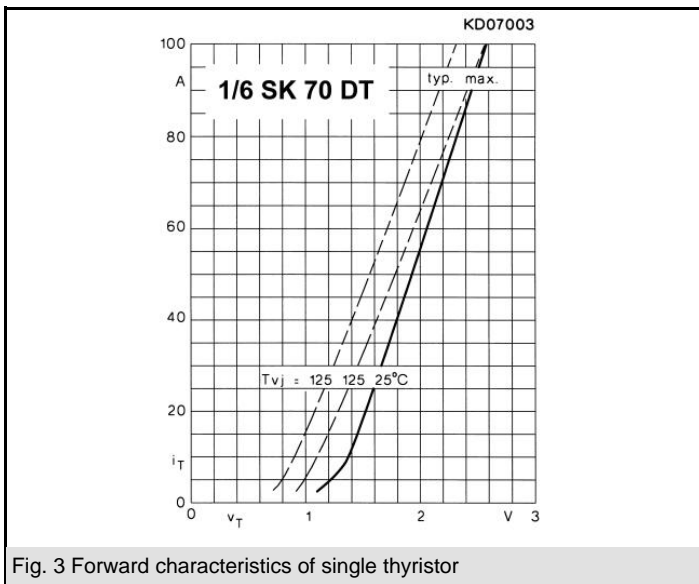
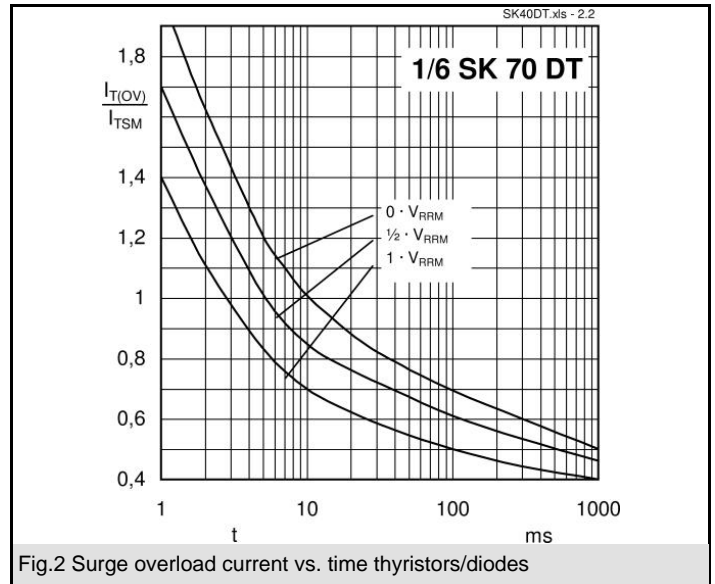
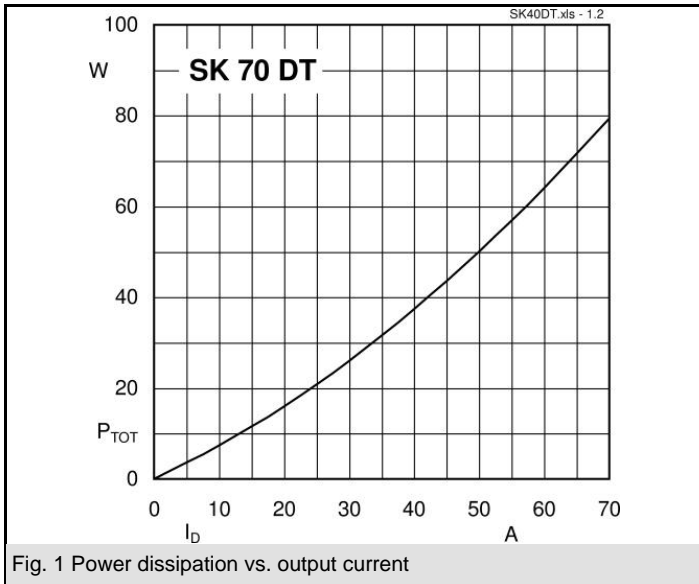
- 1
- 2
- 3

(₄₁₃)	(₄₄₃₊) (₄₃)	5 6 & 7 8
((2 6 7' 9
:''	7''	1; <' 2' 7
%.'''	% 0''	1; <' 2 % 0
%<''	% &''	1; <' 2 % &

Symbol	Conditions	Values	Units
5	2 6 7' 9	& 7	8
$\bar{5}_{13}$	2 6 0 / 9 > %'	? /'	8
@	2 6 % 0 / 9 > %'	. 7'	8
	2 6 0 / 9 > 7 + . , , %'	%'''	8 @
	2 6 % 0 / 9 > 7 + . , , , %'	< 0'	8 @
(₂)	2 6 0 / 9 > < / 8	, % + :	(
(_{2 2})	2 6 % 0 / 9 >	%	(
₂	2 6 % 0 / 9	%'	A
5 > 4 5	2 6 % 0 / 9 > 6 (₄₃ > 4 6 (₄₄₃	, %'	8
	2 6 0 / 9 > 6 % 8 7 B 6 % 8 B C	%	C
	(6 '+' & < p ₃ (0	C
" B	2 6 % 0 / 9 > , ,	, %'''	(B C
B	2 6 % 0 / 9 > , , > 6 /' , , , &' *	, /'	8 B C
E	2 6 % 0 / 9 > , , > # ,	7'	C
5	2 6 0 / 9 > , , > # , B ,	7' B % /'	8
$\bar{5}$	2 6 0 / 9 > , , , 4 . A	% /' B .''	8
(₁₂)	2 6 0 / 9 > , ,	, 0	(
$\bar{5}_{2}$	2 6 0 / 9 > , ,	, %''	8
(₁)	2 6 % 0 / 9 > , ,	, '+ 0 /	(
$\bar{5}$	2 6 % 0 / 9 > , ,	, .	8
4 = F	G #	% + 0	; B H
/ 2 0	2 + %'	0 &'	; B H
2 6 =		F ?' , , , 1 % 0 /	9
2		F ?' , , , 1 % 0 /	9
(₃)	, , /' * > , , > % B % ,	.''' 0 /''	(
	3 E J	0 + /	K
		.	B @
	1 - 3 5 2 G.	2 % /	

www.DataSheet.in

DT



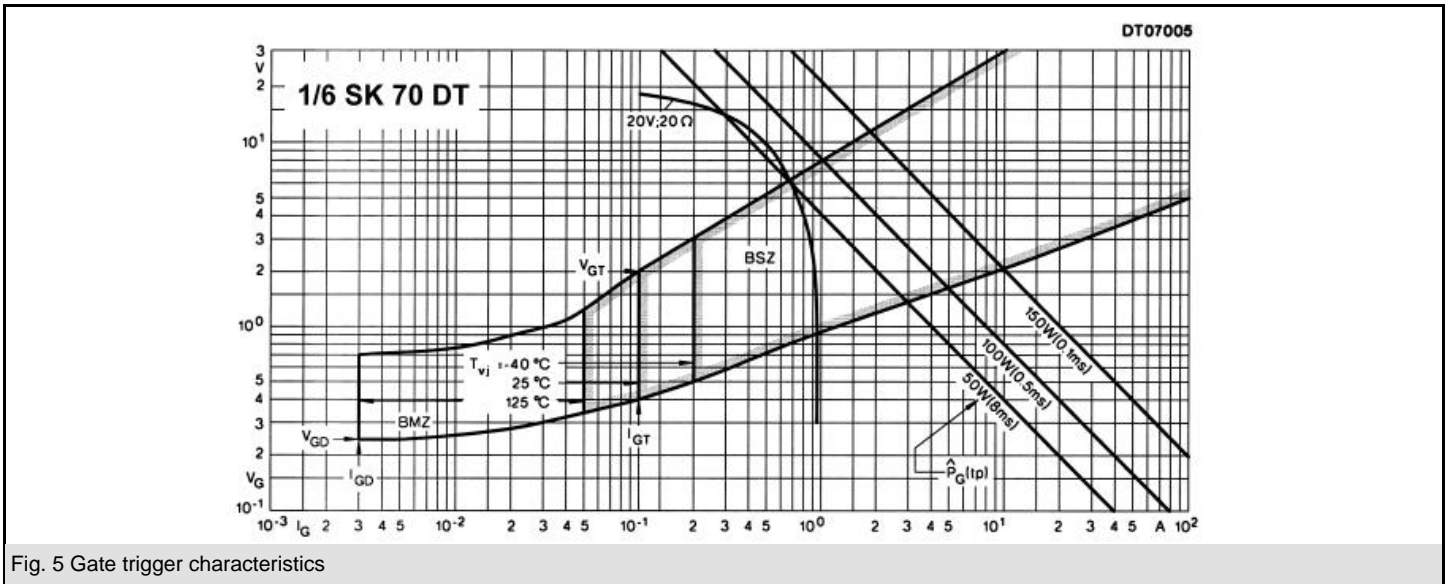
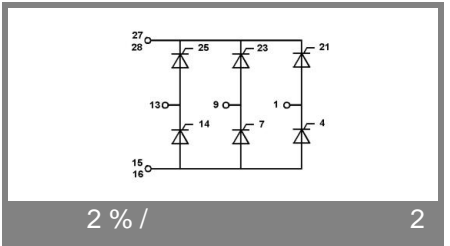
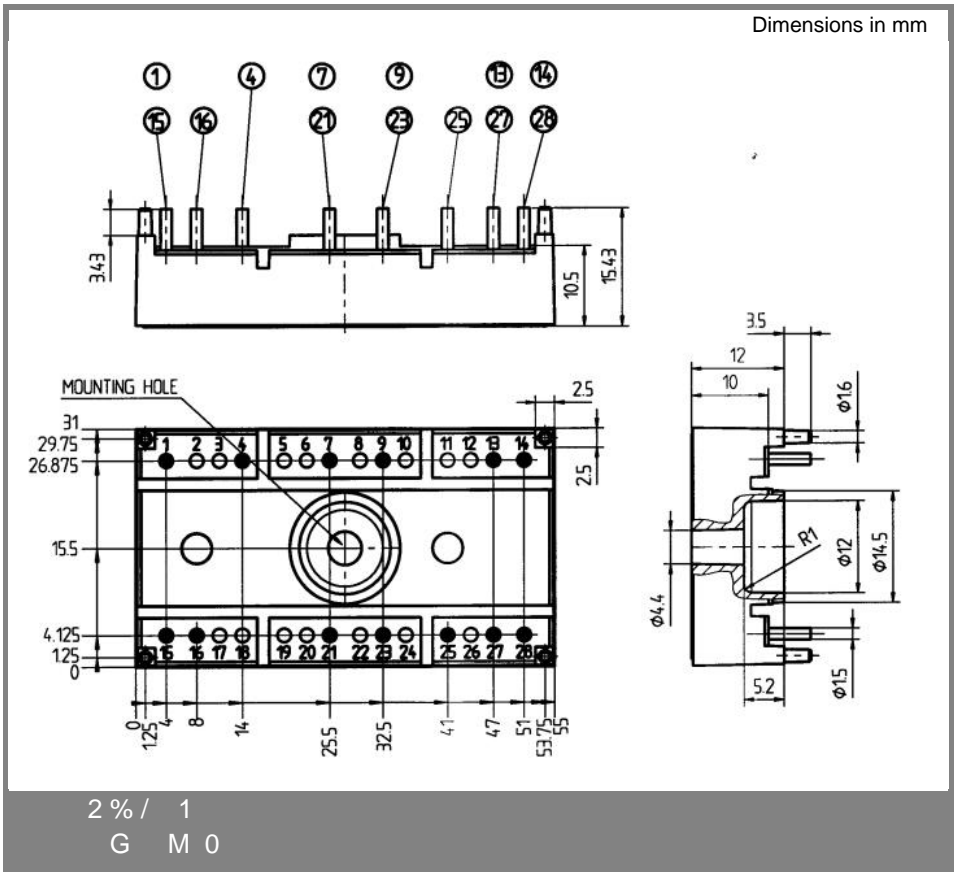


Fig. 5 Gate trigger characteristics



This technical information specifies semiconductor devices but promises no characteristics. No warranty or guarantee expressed or implied is made regarding delivery, performance or suitability.