

SKET 800



SEMIPACK® 6

Thyristor Modules

SKET 800

Preliminary Data

Features

- Precious metal pressure contacts for high reliability
- Thyristor with amplifying gate

Typical Applications

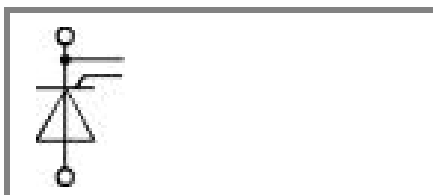
- DC motor control (e. g. for machine tools)
- Temperature control (e. g. for ovens, chemical processes)
- Softstart application

1) calculated with characteristic values

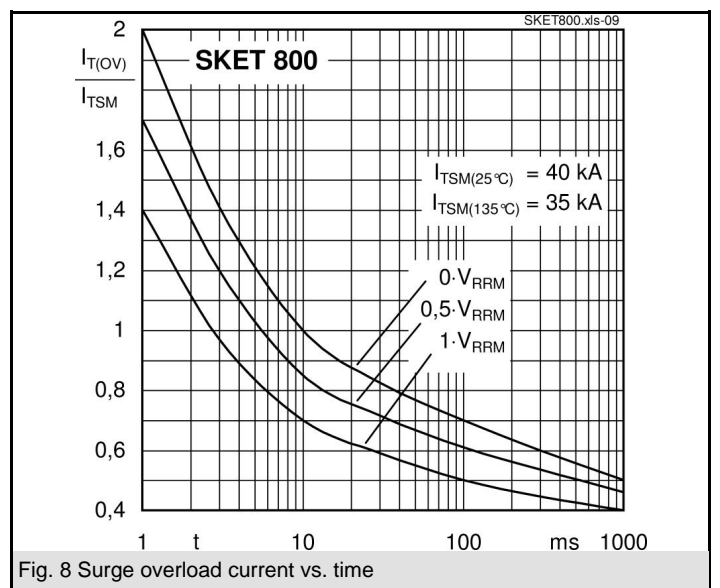
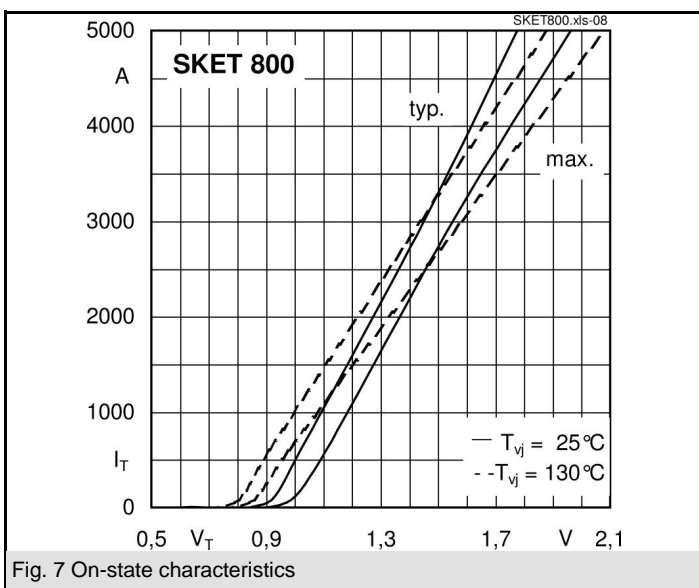
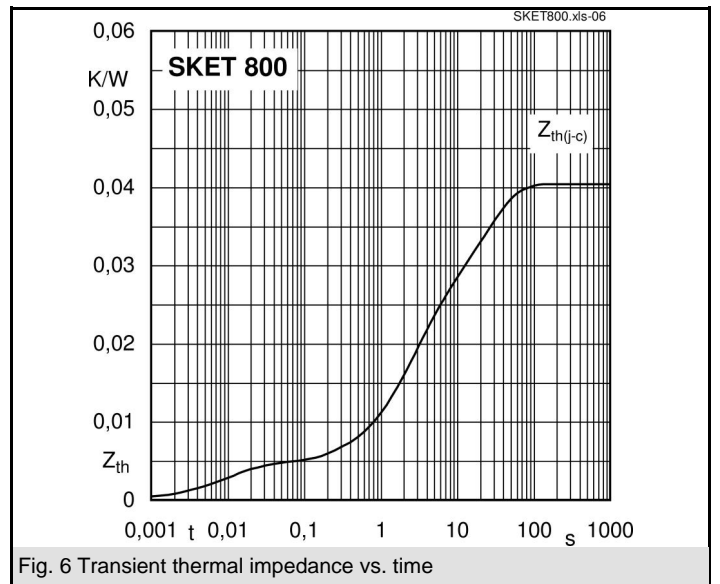
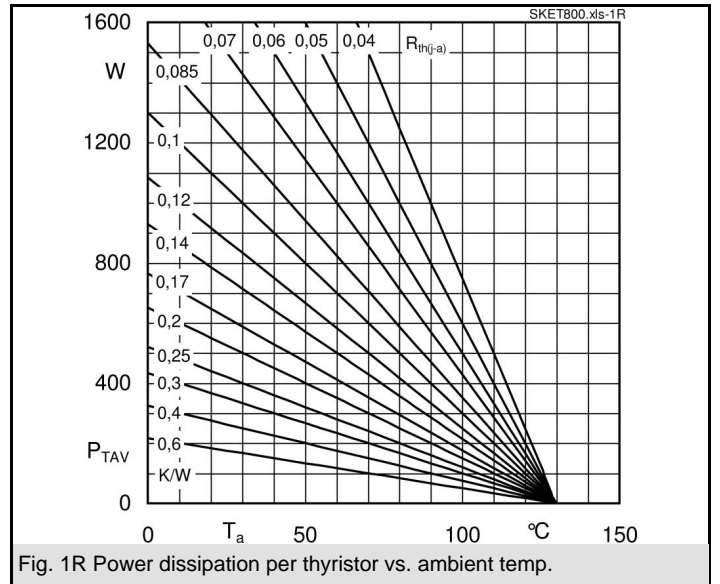
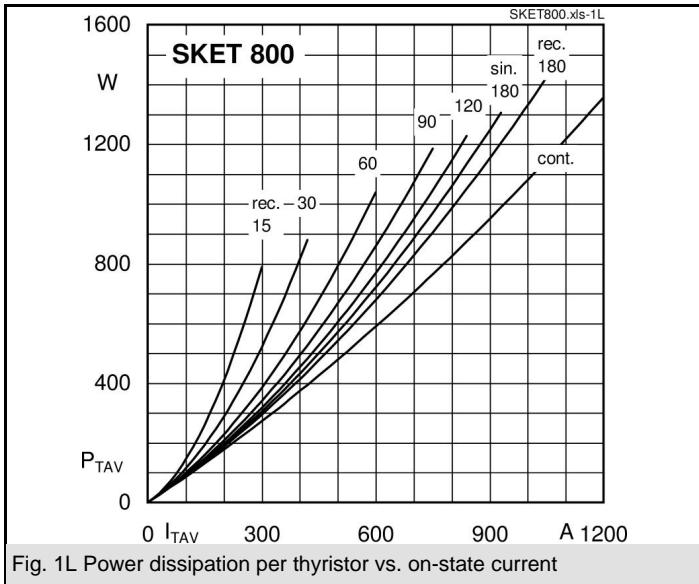
2) characteristic values

V_{RSM} V	V_{RRM}, V_{DRM} V	$I_{TRMS} = 1500$ A (maximum value for continuous operation) $I_{TAV} = 805$ A (sin. 180; $T_c = 85$ °C)	
1500	1400	SKET 800/14G H4	
1900	1800	SKET 800/18G H4	

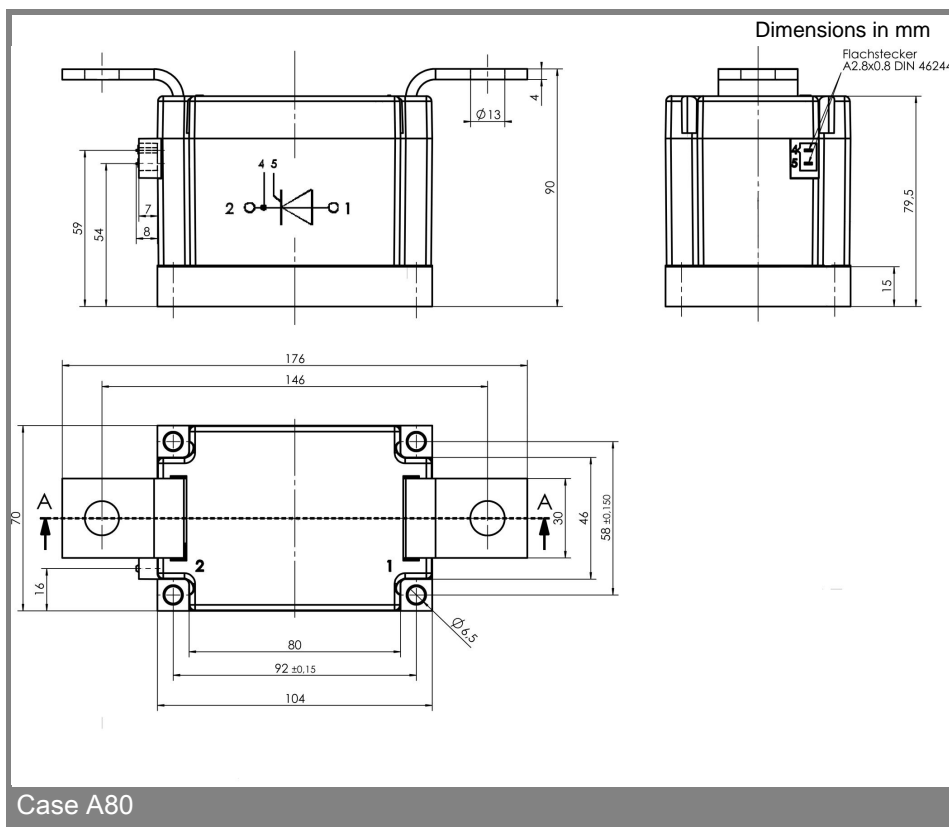
Symbol	Conditions	Values	Units
I_{TAV}	sin. 180; $T_c = 85$ (100) °C;	805 (595)	A
$I_{TAV(typ.)}^{1)}$	sin. 180; $T_c = 85$ (100) °C;	860 (635)	A
I_{TSM}	$T_{vj} = 25$ °C; 10 ms $T_{vj} = 130$ °C; 10 ms	37000 32000	A
i^2t	$T_{vj} = 25$ °C; 8,3 ... 10 ms $T_{vj} = 130$ °C; 8,3 ... 10 ms	6485000 5120000	A ² s A ² s
V_T	$T_{vj} = 25$ °C; $I_T = 3000$ A	max. 1,55	V
$V_{T(typ.)}^{2)}$	$T_{vj} = 25$ °C; $I_T = 3000$ A	1,45	V
$V_{T(TO)}$	$T_{vj} = 130$ °C	max. 0,83	V
r_T	$T_{vj} = 130$ °C	max. 0,25	mΩ
$V_{T(TO)(typ.)}^{2)}$	$T_{vj} = 130$ °C	0,78	V
$r_{T(typ.)}^{2)}$	$T_{vj} = 130$ °C	0,22	mΩ
I_{DD}, I_{RD}	$T_{vj} = 130$ °C; $V_{RD} = V_{RRM}; V_{DD} = V_{DRM}$	max. 150	mA
t_{gd}	$T_{vj} = 25$ °C; $I_G = 1$ A; $di_G/dt = 1$ A/μs	1	μs
t_{gr}	$V_D = 0,67 * V_{DRM}$	2	μs
$(di/dt)_{cr}$	$T_{vj} = 130$ °C	max. 200	A/μs
$(dv/dt)_{cr}$	$T_{vj} = 130$ °C	max. 2000	V/μs
t_q	$T_{vj} = 130$ °C	200	μs
I_H	$T_{vj} = 25$ °C; typ. / max.	1000 / 2000	mA
I_L	$T_{vj} = 25$ °C; $R_G = 33$ Ω; typ. / max.	1500 / 2500	mA
V_{GT}	$T_{vj} = 25$ °C; d.c.	min. 3	V
I_{GT}	$T_{vj} = 25$ °C; d.c.	min. 300	mA
V_{GD}	$T_{vj} = 130$ °C; d.c.	max. 0,25	V
I_{GD}	$T_{vj} = 130$ °C; d.c.	max. 10	mA
$R_{th(j-c)}$	cont.	0,0405	K/W
$R_{th(j-c)}$	sin. 180	0,042	K/W
$R_{th(j-c)}$	rec. 120	0,043	K/W
$R_{th(c-s)}$		0,01	K/W
T_{vj}		- 40 ... + 130	°C
T_{stg}		- 40 ... + 125	°C
V_{isol}	a. c. 50 Hz; r.m.s.; 1s / 1 min.	4800 / 4000	V~
M_s	to heatsink	6 ± 15 %	Nm
M_t	to terminal	18 ± 15 %	Nm
a		5 * 9,81	m/s ²
m	approx.	2150	g
Case		A80	



SKET



SKET 800 THYRISTOR BRIDGE SCR BRIDGE



This technical information specifies semiconductor devices but promises no characteristics. No warranty or guarantee expressed or implied is made regarding delivery, performance or suitability.